

**NORTHEAST AREA WATER AND SEWER SERVICE AREA**  
**City of West Chicago, DuPage County, IL**

## **SANITARY SEWER SYSTEM**

### **East Side Interceptor**

- **Estimated Cost**
  - North Section (\$9.7 Million to \$10.6 Million)
  - Central Section (\$2.4 Million)
  - South Section (\$3.1 Million to \$7.8 Million)
  - Eliminate Lift Stations No. 7, 11, and 12, and a Private Lift Station (\$1.7 Million)
- Total = \$16.9 Million to \$22.5 Million**
- **Need for Improvement: Development East of Route 59 in the Northeast Study Area**

## **SANITARY SEWER SYSTEM**

### **East Side Interceptor**

- **Benefits:**
  - Eliminate Lift Stations No. 7, 11, and 12, and a Private Lift Station
  - Potentially Eliminates Lift Station No. 5
  - Reduces Flow Tributary to the Route 59 Interceptor and Lift Station No. 3
  - Provides Capacity for Unincorporated Subdivisions South of Hawthorne Lane and East of the City

# **NORTHEAST AREA WATER AND SEWER SERVICE AREA**

## **City of West Chicago, DuPage County, IL**

### **SANITARY SEWER SYSTEM**

#### **Additional Considerations**

- **Evaluate a Lift Station and Forcemain Alternative for the East Side Interceptor to Minimize Costs**

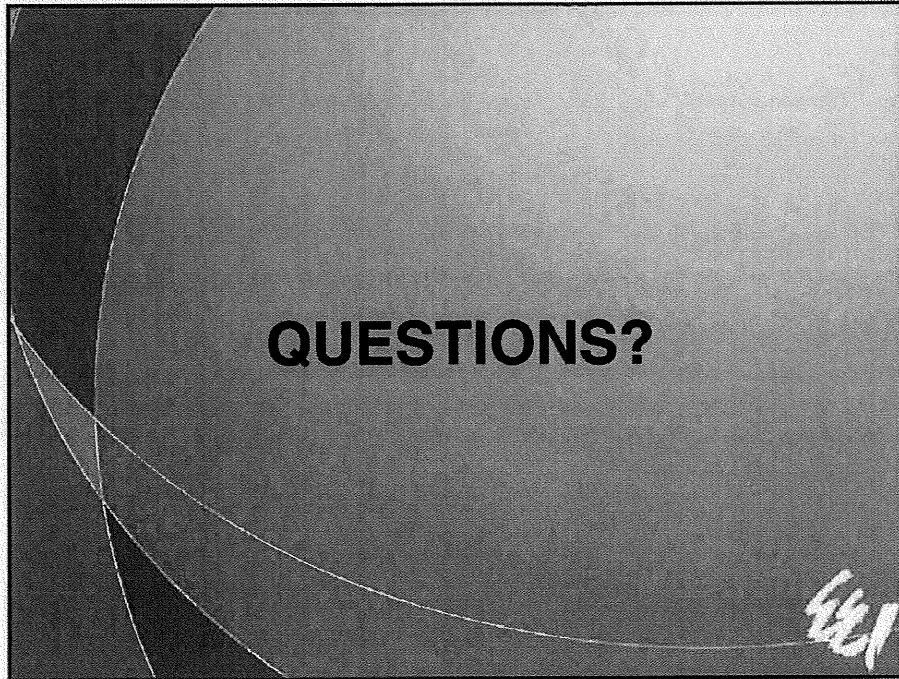


### **SUMMARY OF TOTAL COSTS**

- **Local Improvements = \$37.0 to \$37.6 Million**
- **Regional Improvements = \$13.3 Million**
- **East Side Interceptor and Associated Improvements = \$16.9 to \$22.5 Million**
- **Undeveloped Areas**
- **Water Supply, Water Treatment, and Wastewater Treatment Costs are Not Included.**



**NORTHEAST AREA WATER AND SEWER SERVICE AREA  
City of West Chicago, DuPage County, IL**







ROW

CITY OF WEST CHICAGO

1 inch = 1,950 feet



2" SNOW FALL



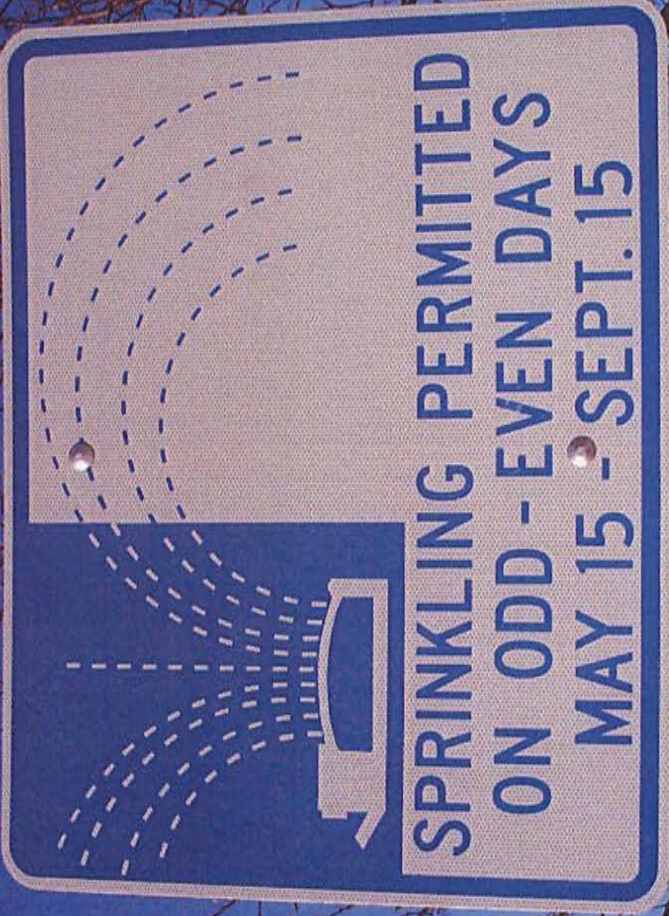
ROW

CITY OF WEST CHICAGO

1 inch = 1,950 feet











**NO  
PARKING  
THIS SIDE  
OF STREET**

**SNOW  
ROUTE**  
**NO PARKING  
ON TOWNSHIP  
ROADS AFTER  
2" SNOWFALL**







**SNOW  
ORD.**

**NO PARKING  
ON VILLAGE  
STREETS AFTER  
2" SNOWFALL**