

# CITY OF WEST CHICAGO

WHERE HISTORY & PROGRESS MEET

Approved as amended 01/07/10

## MINUTES

### INFRASTRUCTURE COMMITTEE

**December 3, 2009 7:00 P.M.**

1. **Call to Order, Roll Call, and Establishment of a Quorum.** Chairman Dzierzanowski called the meeting to order at 7:00 P.M. Roll Call found Aldermen James Beifuss, Nanette Connelly, Sandra Dimas, Nicholas Dzierzanowski, Russell Radkiewicz, and John Smith present. Alderman James Smith was absent.

Also in attendance were Public Works Director Robert Flatter and Administrative Secretary Michelle Baldino.

2. **Approval of Minutes.**

A. **Infrastructure Committee Minutes of November 5, 2009.** Alderman Sandra Dimas made a motion to approve the minutes of November 5, 2009 with no changes, seconded by Alderman Russell Radkiewicz. Voting Yea: Aldermen Sandra Dimas, Russell Radkiewicz, James Beifuss, Nanette Connelly, Nicholas Dzierzanowski and John Smith. Voting Nay: 0.

3. **Public Participation / Presentations.** None.

4. **Items for Consent.** Chairman Dzierzanowski read the items for Consent from the Agenda and asked if any members wanted any of them pulled from a vote for discussion.

A. **Contract Award – Phase II Design Engineering Services For Wilson & Joliet Street Culvert Replacement Project – Strand Associates, Inc.**

B. **Contract Amendment No. 1/First Extension to Well No. 7 Generator Project – Broadway Electric, Inc.**

C. **Acceptance of Public Improvements – Jel Sert Building Expansion Project at 444 Charles Court.**

**Alderman Nanette Connelly made a motion to approve Consent Items A, B, and C, with no discussion, seconded by Alderman James Beifuss. Voting Yea: Aldermen Nanette Connelly, James Beifuss, Sandra Dimas, Nicholas Dzierzanowski, Russell Radkiewicz, and John Smith. Voting Nay: 0.**

**5. Items for Discussion.**

A. Mr. Flatter informed the Committee that at the previous meeting, Alderman Beifuss requested to see the plans for Landscaping at the Metra Station. Mr. Flatter handed out the plans and reviewed them with the Committee members (Attachment A).

**6. Unfinished Business.**

A. Alderman Dimas asked for an update regarding the Stamped Crosswalk Proposal. Mr. Flatter informed her that the work would be done in the spring. Both contractors that supplied the lowest price proposals will be used for the trial, resulting in two different products to be tried. The contractor with the alternate product has stated that he will allow the City to hold 50% in case of paint failure.

**7. Other Business.** None.

**8. New Business.** None.

**9. Reports from Staff.**

A. Main Street Tunnel Condition Assessment Report – Strand Associates. Mr. Flatter reviewed the report with the Committee. During discussion, staff was directed to proceed with a contract with Strand Associates for the development of plans for the tunnel rehabilitation, and for development of conceptual plans regarding alternatives for the ~~north~~ northeast end of the tunnel. Other items of discussion included the materials to be used, lighting issues, ADA compliance, and construction schedule to not interfere with school days.

**10. Adjournment.** At 7:30 P.M., Alderman Nanette Connelly made a motion to adjourn, seconded by Alderman James Beifuss. Motion was approved by voice vote.

Respectfully submitted,

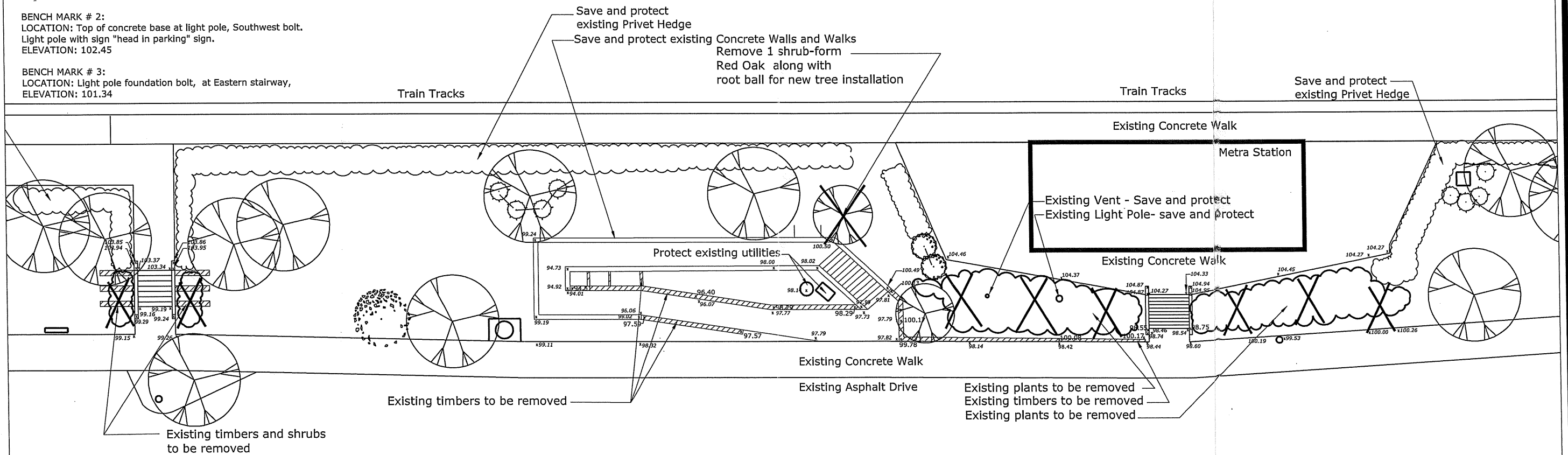
Michelle Baldino  
Administrative Secretary

NOTE: All existing trees are to remain with the exception of the one shrub-form Red Oak as noted. Only the shrubs in designated removal areas are to be removed.

BENCH MARK # 1:  
LOCATION: Fire Hydrant at parking lot across from Metra Station main entrance, at flange bolt above letter "s".  
ELEVATION: 100.00

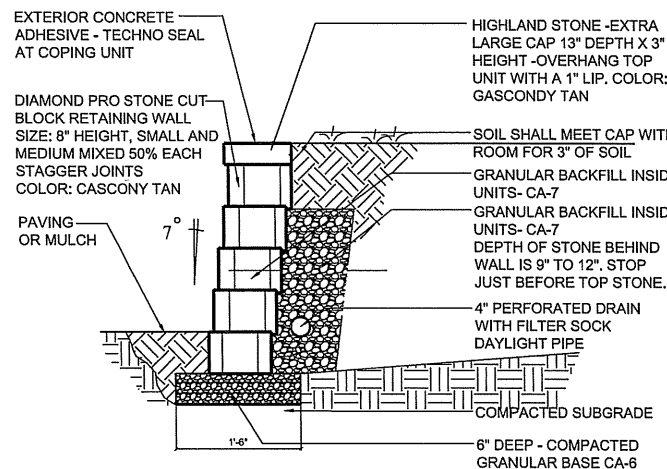
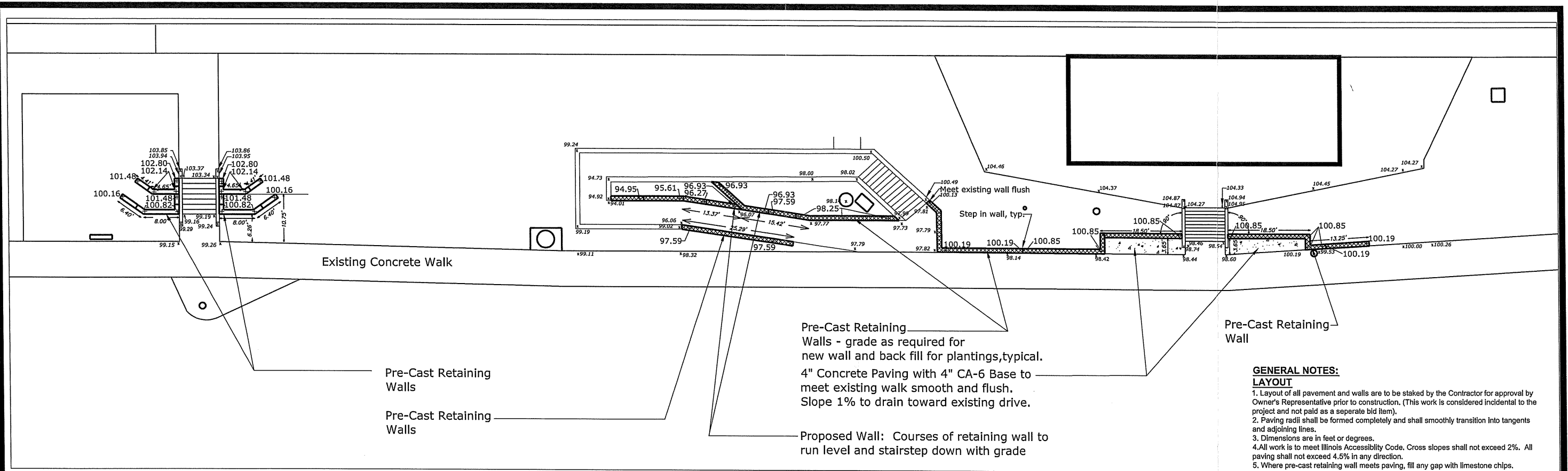
BENCH MARK # 2:  
LOCATION: Top of concrete base at light pole, Southwest bolt.  
Light pole with sign "head in parking" sign.  
ELEVATION: 102.45

BENCH MARK # 3:  
LOCATION: Light pole foundation bolt, at Eastern stairway,  
ELEVATION: 101.34

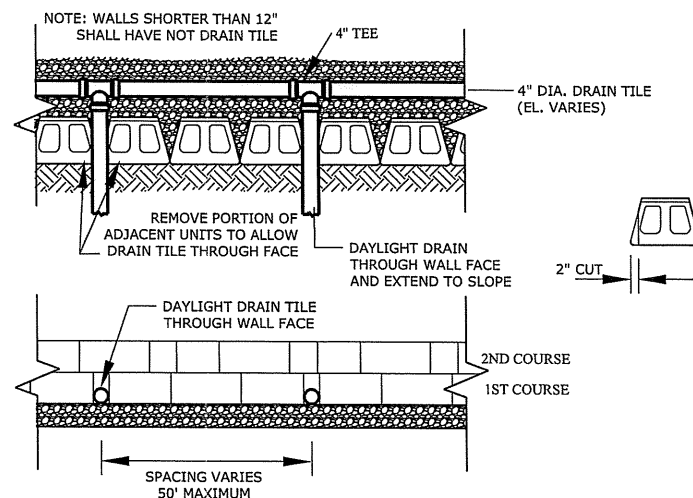


#### GENERAL NOTES: EXISTING CONDITIONS & REMOVALS

1. The Contractor is to locate all utilities, public and private, prior to beginning construction. Contractor will be responsible for any damages to utilities caused by their work. Contact J.U.L.I.E. at 1-800-982-0123 for utility information.
2. Site conditions are shown based upon available information. A topographic survey was not completed.
3. The Contractor shall walk the site prior to submitting a bid to be fully familiar with site conditions.
4. The Contractor shall protect and preserve all section, property or survey reference markers.
5. Protect all trees and vegetation not scheduled for removal. Do not drive, store equipment or materials within dripline of existing trees. Hold necessary disturbance to a minimum.
6. Contractor will be held responsible for damage to items not scheduled for removal.
7. Temporary construction fencing shall be erected and maintained around any open hole or pit. Please protect the public from any potential dangerous area during construction. No open holes, pits, or trenches shall be left overnight which are not fully fenced.
8. Vehicular Construction access shall be existing roadways and parking lot drives. Any other construction access shall be approved by the Owner's representative in writing.
9. Construction Limits: Construction Limits are the Metra lot property. Do not store equipment or stockpile materials outside of construction limits. On-site storage of materials or equipment shall be allowed with approval by Owner.
10. Removal plant material will be reviewed on site with Owner's rep prior to work beginning. Removal of mulch, lawn or soil as necessary for completion of project is incidental to project.

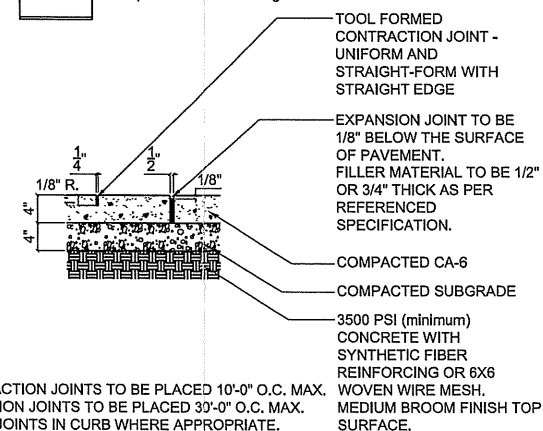


- SAW-CUT AS REQUIRED TO CONSTRUCT 90-DEGREE MITERED CORNER
- TOP
- WALL FACE
- SPLIT FACE AND END
1. ALWAYS START CAPPING WALL FROM THE LOWEST ELEVATION.
  2. LAY OUT CAPS PRIOR TO USING ADHESIVE.
  3. CUT CAPS TO FIT. VARIOUS COMBINATIONS OF LONG- AND SHORT-CAP FACES WILL BE NECESSARY FOR RADII GREATER THAN THE MINIMUM.
  4. ALTERNATE SHORT- AND LONG-CAP FACES EVERY OTHER CAP TO ACHIEVE A STRAIGHT ROW OF CAPS.
  5. USE EXTERIOR-GRADE CONSTRUCTION ADHESIVE TO SECURE CAPS.



**LEGEND:**

- x 99.78 Existing Spot Grade
- + 99.90 Proposed Spot Grade
- Proposed Pre-Cast Retaining Wall
- Proposed Concrete Paving



Pre-Cast Retenting Wall  
SCALE: Not to Scale  
DIAMOND\_WALL

4" Concrete Paving  
SCALE: 1" = 1'-0"  
Conc4

NOTES: ANY CONCRETE INSTALLED OR REPLACED SHALL FOLLOW DETAIL ABOVE -EXPECT DEPTH OF REPLACED CONCRETE SHALL MATCH EXISTING DEPTH WITH A 4" MIN. DEPTH.  
DOWEL NEW WORK INTO EXISTING PAVMENT, 18" O.C., TYPICAL.

SCALE:  
1" = 10'



L2

Drawn/Revised	
mj/mk	3-25-09
mj/mk	4-14-09
mj/mk	5-26-09

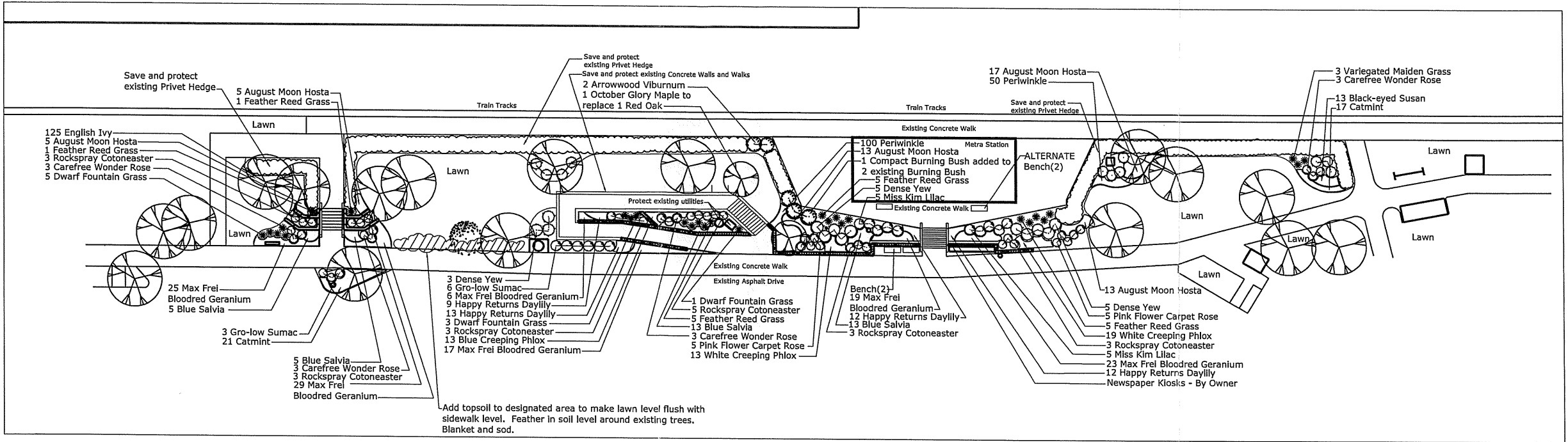
243-METRA-West Chicago\Metra Station West Chicago.dwg

GENERAL NOTES: LANDSCAPING

1. The landscape contractor shall be responsible for making themselves familiar with all underground utilities and structures. Call J.U.L.I.E.
2. All existing plant material and street trees shall be saved and protected except as noted on the removals plan.
3. Plant material shall be supplied from Northern Illinois nursery stock, shall be dug the planting season it is installed, and shall conform to the American Association of Nurserymen's standards.
4. Plant material shall be size and type specified. Substitution of plant material shall be on a case by case basis and approved in writing by the Owner. In no case shall plant material be smaller than indicated in the plans.
5. Final grade of planting beds shall be within 1" of proposed wall elevations.
6. Do not willfully proceed with plantings as designed when it is obvious that obstructions and/or grade differences exist that may not have been known during the design process. Such conditions shall be immediately brought to the attention of the Owner's Representative.
7. Plant locations shall be flagged in field by Contractor. Final location of all plant material shall be subject to approval of the Owner's Representative prior to digging any holes. The landscape contractor is responsible for providing Owner's Representative with 48 hour minimum advance notice prior to planting.
8. Plants shall be watered on the day they are planted and maintained with watering until final acceptance of the project.
9. Apply a pre-emergent as per manufacturer's specification prior to installing mulch.
11. Beds and tree rings (6' diameter) shall have 3" of hardwood shredded mulch applied and a 4" deep spade edge at lawn for new beds or disturbed areas. Mulch to match existing mulch color and style. Existing beds which are not part of the new plantings do not need new mulch.
12. Landscape plant material shall be guaranteed for 12 months from final acceptance. Any plant 1/3 dead or more shall be replaced under the guarantee.
13. New mulch to match existing mulch as closely as possible

GENERAL NOTES: SODDING

1. Lawn Sodding shall be under favorable weather conditions, and shall follow dates in specification.
2. See specifications for detailed information on sod type.



PLANT LIST

Trees

Qty.	Size	Common Name	Latin Name
1	2.5" cal.	October Glory Red Maple	Acer rubrum 'October Glory'

Shrubs

Qty.	Size	Common Name	Latin Name
20	5 gal. pot	Rockspray Cotoneaster	Cotoneaster horizontalis 'Hessel'
4	36" ht.	Compact Burning Bush	Euonymus alata 'Compacta'
9	5 gal. pot	Gro-Low Sumac	Rhus aromatica 'Gro-Low'
12	3 gal. pot	Carefree Wonder Shrub Rose	Rosa 'MEIpitac'
10	3 gal. pot	Pink Flower Carpet Rose	Rosa 'Naotraum'
10	24" ht.	Miss Kim Lilac	Syringa patula 'Miss Kim'
2	42" ht.	Arrowwood Viburnum	Viburnum dentatum

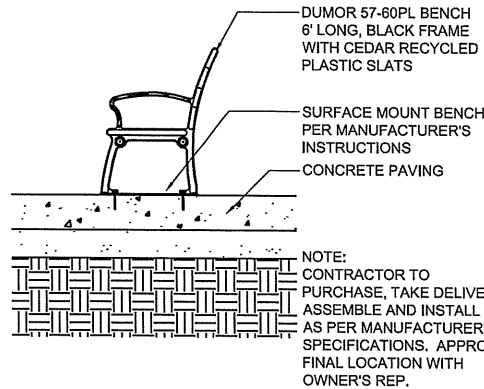
Evergreens

Qty.	Size	Common Name	Latin Name
16	24" x 24"	Dense Yew	Taxus x media 'Densiformis'

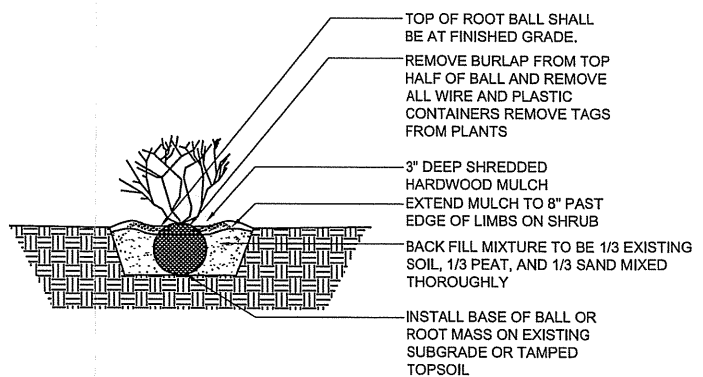
Perennials, Grasses, and Groundcovers

Qty.	Size	Common Name	Latin Name
17	1 gal. pot	Feather Reed Grass	Calamagrostis acutiflora 'Karl Foerster'
119	1 gal. pot	Max Frei Bloodred Geranium	Geranium sanguineum 'Max Frei'
125	3" cell	English Ivy	Hedera helix
66	1 gal. pot	Happy Returns Daylily	Hemerocallis 'Happy Returns'
53	1 gal. pot	August Moon Hosta	Hosta 'August Moon'
3	1 gal. pot	Variegated Maiden Grass	Miscanthus sinensis 'Variegatus'
38	1 gal. pot	Catmint	Nepeta racemosa 'Walker's Low'
9	1 gal. pot	Dwarf Fountain Grass	Pennisetum alopecuroides 'Hameln'
13	1 gal. pot	Blue Creeping Phlox	Phlox subulata 'Emerald Blue'
32	1 gal. pot	White Creeping Phlox	Phlox subulata 'White Delight'
13	1 gal. pot	Black-eyed Susan	Rudbeckia fulgida 'Goldstrum'
36	1 gal. pot	Blue Salvia	Salvia superba 'East Friesland'
150	3" cell	Periwinkle	Vinca minor

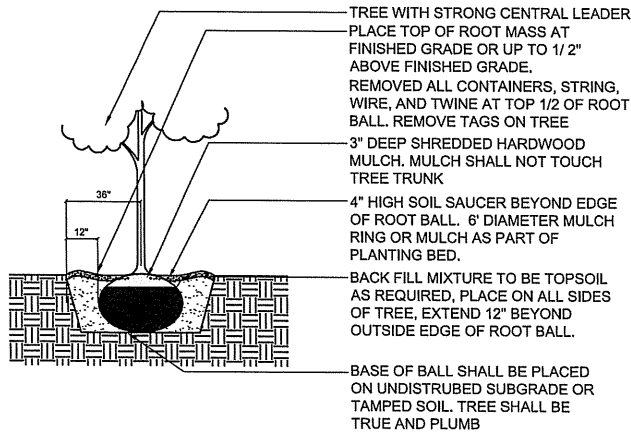
Note: Plants indicated in plant list but not shown on plans are for area around new irrigation box. These will be placed with Owner's Rep on site after irrigation equipment is installed. These include:  
3 Burning Bush  
3 Dense Yew  
20 Happy Returns Daylily



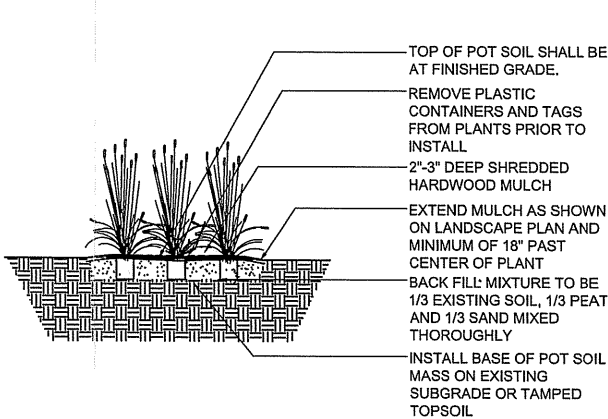
Bench on Concrete Paving  
SCALE: 1/2" = 1'-0"



Shrub Installation  
SCALE: Not to Scale



Tree Installation  
SCALE: Not to Scale

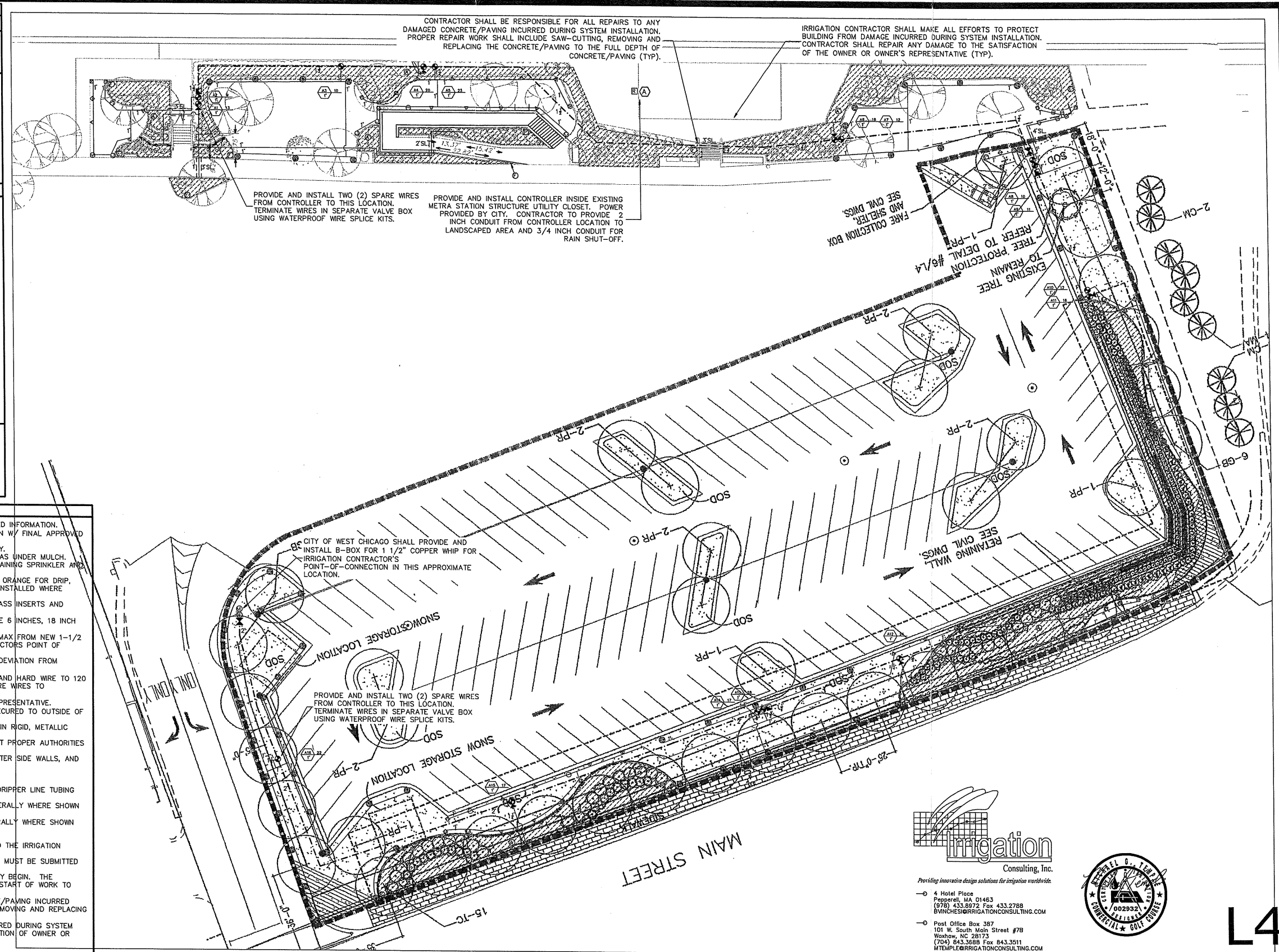


Perennial or Ornamental Grass Installation  
SCALE: Not to Scale



IRRIGATION LEGEND			
SYMBOL	PSI	SPACING	DESCRIPTION
	40	25'	MP3000 ROTARY NOZZLE ON 6-INCH SPRAY SPRINKLER
	40	18'	MP2000 ROTARY NOZZLE ON 6-INCH SPRAY SPRINKLER
	30	15'	6-INCH POP UP SPRAY SPRINKLER W/ CHECK VALVE AND PRESS. REG.
	30	12'	
	30	10'	
	30	8'	
	30	5'	
	30	4'x30'	IN-LINE EMITTER DRIP TUBING
	30	4'x15'	
	45	12"x18"	24 VOLT ELECTRIC ZONE VALVE (SEE VALVE DESIGNATOR FOR FLOW AND SIZES)
			ISOLATION GATE VALVE (LINE SIZE)
			1" QUICK COUPLING VALVE
			AIR VACUUM RELIEF VALVE
			AUTOMATIC FLUSHING VALVE
			24 VOLT ELECTRIC ZONE VALVE W/ DISK FILTER (DRIP) (SEE VALVE DESIGNATOR FOR FLOW AND SIZES)
			CLASS-200 PVC LATERAL PIPING (SIZE AS INDICATED, ALL UNLABELED PIPE TO BE 1 INCH)
			CLASS-200 PVC MAINLINE PIPING (SIZE AS INDICATED)
			CLASS-160 PVC PIPE SLEEVE (SIZE AS INDICATED)
			INSTALL SCH-40 PVC WIRE CONDUIT ADJACENT TO ALL MAINLINE PIPE SLEEVES, MINIMUM WIRE CONDUIT SIZE TO BE 2-INCH, UNLESS OTHERWISE NOTED. SEE SLEEVING DETAIL.
			AUTOMATIC RAIN SENSOR
			AUTOMATIC CONTROLLER
			IRRIGATION WATER METER
			BACK FLOW PREVENTION DEVICE IN ENCLOSURE
VALVE DESIGNATION:			
	STATION NO.		
	FLOW		
	VALVE SIZE		

- IRRIGATION NOTES**
- SEE IRRIGATION DETAILS AND SPECIFICATIONS SECTION 02810 FOR ADDITIONAL REQUIRED INFORMATION.
  - COORDINATE FINAL LOCATION OF ALL DRIP TUBING, SPRINKLERS AND NOZZLE SELECTION W/ FINAL APPROVED LANDSCAPE.
  - ALL PIPE AND VALVE LOCATIONS ARE DIAGRAMMATIC, CONTRACTOR SHALL FIELD VERIFY.
  - ALL VALVES AND VALVE BOXES SHALL BE PLACED, WHERE POSSIBLE, IN PLANTED AREAS UNDER MULCH.
  - INSTALL ALL PIPING AS FAR FROM TREES AND ROOT BALLS AS POSSIBLE WHILE MAINTAINING SPRINKLER AND DRIP TUBE SPACING.
  - ALL CONTROL WIRE SHALL BE #14 GAUGE SINGLE STRAND, RED FOR TURF ZONES AND ORANGE FOR DRIP. ALL COMMON WIRE SHALL BE #14 GAUGE SINGLE STRAND WHITE AND ALL SPARE WIRES, INSTALLED WHERE SHOWN, SHALL BE #14 GAUGE SINGLE STRAND BLUE.
  - QUICK COUPLING VALVES SHALL BE INSTALLED ON 1 INCH PVC SWING JOINTS WITH BRASS INSERTS AND STABILIZERS. (SEE DETAIL)
  - ALL SPRINKLERS SHALL BE INSTALLED ON SWING PIPE ASSEMBLIES, MIN. LENGTH TO BE 6 INCHES, 18 INCH MAXIMUM.
  - IRRIGATION SYSTEM IS DESIGNED FOR SEPARATE WATER SUPPLY TO PROVIDE 28 GPM MAX FROM NEW 1-1/2 INCH SERVICE. SYSTEM TO PRODUCE 60-PSI DYNAMIC PRESSURE AT IRRIGATION CONTRACTORS POINT OF CONNECTION IN LANDSCAPED AREA.
  - CONTRACTOR SHALL TEST DYNAMIC PRESSURE BEFORE STARTING WORK, REPORT ANY DEVIATION FROM PRESSURE REQUIRED TO OWNER'S REPRESENTATIVE BEFORE CONTINUING.
  - INSTALL CONTROLLER IN UTILITY CLOSET AS DIRECTED BY OWNER'S REPRESENTATIVE AND HARD WIRE TO 120 VOLT BUILDING POWER SUPPLY USING LICENSED ELECTRICIAN. ROUTE ALL ZONE AND SPARE WIRES TO CONTROLLER VIA 2 INCH CONDUIT.
  - INSTALL RAIN SENSOR ON EXTERIOR BUILDING WALL WHERE DIRECTED BY OWNER'S REPRESENTATIVE. EXTERIOR RAIN SENSOR WIRING SHALL BE CONTAINED IN 3/4 INCH METALLIC CONDUIT, SECURED TO OUTSIDE OF BUILDING WALL.
  - ALL ABOVE GROUND WIRING, INSIDE AND OUTSIDE OF BUILDING, SHALL BE INSTALLED IN RIGID, METALLIC CONDUIT FOR VANDALISM PROTECTION.
  - COORDINATE LOCATION OF ALL EXISTING AND FUTURE UTILITIES ON SITE AND CONTACT PROPER AUTHORITIES AND UTILITY COMPANIES BEFORE THE START OF WORK.
  - IN-LINE DRIP TUBING TO BE INSTALLED 6 INCHES FROM ALL MASONRY WALLS, PLANTER SIDE WALLS, AND CURBING, ON AN 18 INCH CENTER TO CENTER ROW SPACING.
  - FLUSH ALL LATERAL LINES BEFORE INSTALLING IN-LINE DRIP TUBING OR SPRINKLERS.
  - STAKE IN-LINE DRIP TUBING AT MINIMUM 5 FOOT INTERVALS TO PREVENT MOVEMENT.
  - IN-LINE DRIP TUBING TO BE INSTALLED 4 INCHES BELOW GRADE UNDER MULCH. NO DRIPPER LINE TUBING SHALL BE VISIBLE TO THE NAKED EYE.
  - INSTALL AUTOMATIC FLUSH PORTS AT LOWEST POINT OF PVC EXHAUST HEADER, GENERALLY WHERE SHOWN ON THE DRAWINGS.
  - INSTALL AIR VACUUM/RELIEF VALVES AT HIGH POINT OF IN-LINE DRIP TUBING, GENERALLY WHERE SHOWN ON THE DRAWINGS.
  - SPRAY SPRINKLERS FOR TURF SHALL HAVE 6 INCH POP UP HEIGHT.
  - CONTRACTOR MUST SUBMIT SHOP DRAWINGS AS PER THE WRITTEN SPECIFICATIONS TO THE IRRIGATION CONSULTANT FOR APPROVAL PRIOR TO ORDERING MATERIAL AND BEGINNING WORK.
  - ANY AND ALL MATERIAL SUBSTITUTIONS WHICH VARY FROM THE SPECIFIED PRODUCTS MUST BE SUBMITTED TO THE IRRIGATION CONSULTANT FOR APPROVAL AS PART OF THE SUBMITTAL PROCESS.
  - ONCE APPROVED SUBMITTALS HAVE BEEN RETURNED TO THE CONTRACTOR, WORK MAY BEGIN. THE IRRIGATION CONSULTANT MUST BE NOTIFIED A MINIMUM OF 7 DAYS IN ADVANCE OF THE START OF WORK TO COORDINATE ON-SITE SUPERVISION AND ADMINISTRATION.
  - CONTRACTOR SHALL BE RESPONSIBLE FOR ALL REPAIRS TO ANY DAMAGED CONCRETE/PAVING INCURRED DURING SYSTEM INSTALLATION. PROPER REPAIR WORK SHALL INCLUDE SAW-CUTTING, REMOVING AND REPLACING THE CONCRETE/PAVING TO THE FULL DEPTH OF CONCRETE/PAVING (TYP).
  - CONTRACTOR SHALL MAKE ALL EFFORTS TO PROTECT BUILDING FROM DAMAGE INCURRED DURING SYSTEM INSTALLATION. CONTRACTOR SHALL REPAIR ANY DAMAGE TO BUILDING TO THE SATISFACTION OF OWNER OR OWNER'S REPRESENTATIVE (TYP).



**uplandDesign Ltd**  
Park Planning and Landscape Architecture  
24042 Lockport St, Plainfield, Illinois 60544  
815-254-0091 www.uplanddesign.com

## Irrigation Plan

**Metra Station**  
City of West Chicago

**irrigation**  
Consulting, Inc.  
Providing innovative design solutions for irrigation worldwide.  
4 Hotel Place  
Pepperell, MA 01463  
(978) 433.8972 Fax 433.2788  
BWINCHES@IRRIGATIONCONSULTING.COM  
Post Office Box 387  
101 W. South Main Street #7B  
Waxhaw, NC 28173  
(704) 843.3688 Fax 843.3511  
MTEMPLE@IRRIGATIONCONSULTING.COM

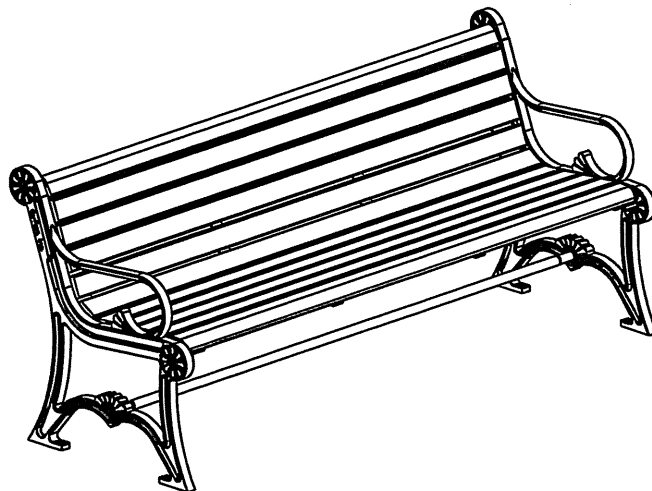
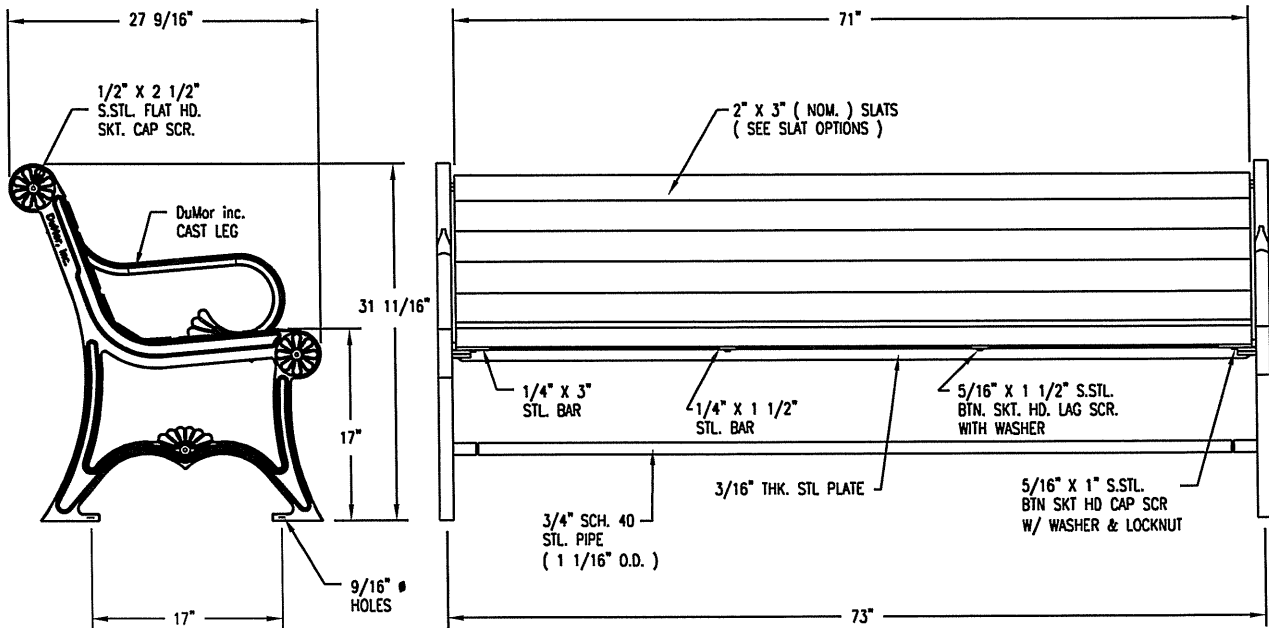


SCALE:  
1" = 20'

North

Drawn/Revised	
mt/gb	4-22-09
mt/gb	4-28-09
og/gb	5-26-09

243-METRA-West Chicago/Metra Station West Chicago.dwg



☐ CUSTOM LETTERING ( 37 SPACES ) \_\_\_\_\_

#### NOTES

- 1.) ALL STL. MEMBERS COATED W/ ZINC RICH EPOXY THEN FINISHED W/ POLYESTER POWDER COATING.
- 2.) 1/2" x 3 3/4" EXPANSION ANCHOR BOLTS PROVIDED.
- 3.) CUSTOM LETTERING AVAILABLE FOR RECESSED SIDE PANELS ( TOTAL OF 37 SPACES ).

#### SLAT OPTIONS

- ☐ 'CEDAR' RECYCLED PLASTIC
- ☐ 'GREEN' RECYCLED PLASTIC
- ☐ 'GREY' RECYCLED PLASTIC
- ☐ 'REDWOOD' RECYCLED PLASTIC
- ☐ OTHER \_\_\_\_\_

**DuMor, inc.**  
P.O. Box 142 Mifflintown, PA 17059-0142

SCALE : NONE  
DATE DRAWN : 12/11/01  
DRAWN BY : AH  
DATE REV. : 4/3/08  
REV. BY : AWH

TITLE : BENCH

REV. C

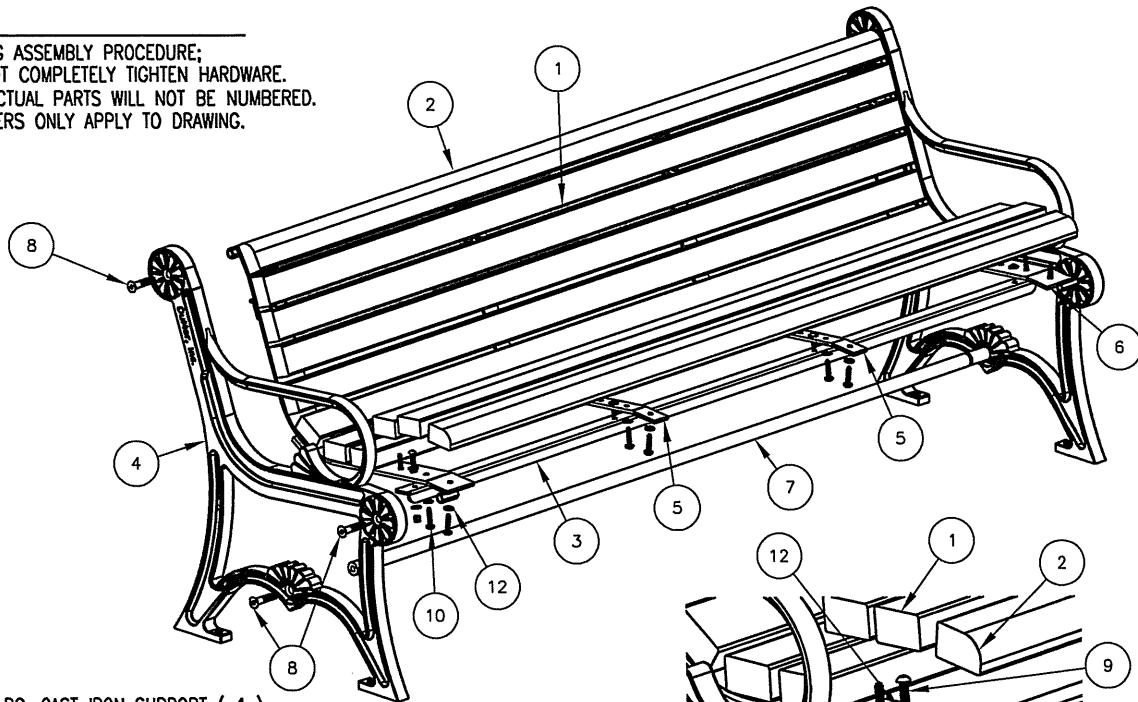
DRAWING NUMBER

57-60PL

SHEET 1 OF 2

**NOTE:**

- 1.) DURING ASSEMBLY PROCEDURE;  
DO NOT COMPLETELY TIGHTEN HARDWARE.
- 2.) THE ACTUAL PARTS WILL NOT BE NUMBERED.  
NUMBERS ONLY APPLY TO DRAWING.



**STEP 1:**

- USE 2 - PC. CAST IRON SUPPORT ( 4 )  
1 - PC. 71 3/4" PIPE BRACE ( 7 )  
2 - PCS. 1/2" X 2 1/2" FLT. SKT. HD. CAP SCR. ( 8 )  
ATTACH CAST IRON BENCH SUPPORT ( 4 ) TO 71 3/4" PIPE  
BRACE ( 7 ) USING HARDWARE ( 8 ). TIGHTEN TO SNUG FIT.

**STEP 2:**

- USE 2 - PCS. END CONTOUR STRAP ( 6 )  
4 - PCS. 1/2" X 2 1/2" FLT SKT. HD. CAP SCR. ( 8 )  
ATTACH END CONTOUR STRAPS ( 6 ) TO STEP 1 ASSEMBLY  
USING HARDWARE ( 8 ). TIGHTEN TO SNUG FIT.

**STEP 3:**

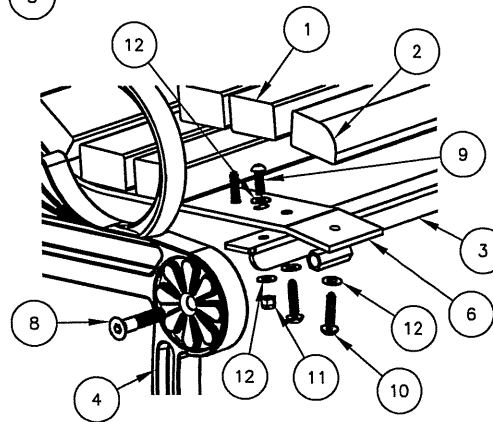
- USE 2 - PCS. 71" SEAT BRACE ( 3 )  
4 - PCS. 5/16" X 1" SS. BTN SKT HD CAP SCR ( 9 )  
4 - PCS. 5/16" SS. NYLON LOCKNUT ( 11 )  
8 - PCS. 5/16" SS. FLAT WASHER ( 12 )  
ATTACH 71" SEAT BRACE ( 3 ) TO STEP 2 ASSEMBLY  
USING HARDWARE ( 9, 11 & 12 ). TIGHTEN TO SNUG FIT.

**STEP 4:**

- USE 2 - PCS. CENTER CONTOUR STRAP ( 5 )  
4 - PCS. 5/16" X 1" SS. BTN SKT HD CAP SCR ( 9 )  
4 - PCS. 5/16" SS. NYLON LOCKNUT ( 11 )  
8 - PCS. 5/16" SS. FLAT WASHER ( 12 )  
ATTACH CENTER CONTOUR STRAP ( 5 ) TO STEP 3 ASSEMBLY  
USING HARDWARE ( 9, 11 & 12 ). TIGHTEN TO SNUG FIT.

**STEP 5:**

- USE 9 - PCS. 2" X 3" X 71" PLASTIC INT'R SLAT ( 1 )  
2 - PCS. 2" X 3" X 71" PLASTIC EDGE SLAT ( 2 )  
44 - PCS. 5/16" X 1 1/2" SS. BTN. SKT. HD. LAG ( 10 )  
44 - PCS. 5/16" SS. FLAT WASHER ( 12 )  
ATTACH 2" X 3" X 71" PLASTIC SLATS ( 1 & 2 ) TO STEP 4 ASSEMBLY  
USING HARDWARE ( 10 & 12 ). TIGHTEN TO SNUG FIT.  
REPEAT UNTIL ALL SLATS ARE ATTACHED.



**DETAIL A**

**STEP 6:**

UPON COMPLETION OF BENCH ASSEMBLY SQUARE ALL  
COMPONENTS THEN TIGHTEN ALL HARDWARE.

**STEP 7:**

MOUNT AND ANCHOR AS SPECIFIED.

ITEM	QTY	PART NO	DESCRIPTION
1	9	0-143-60PL-01	2" X 3" X 71" PLASTIC INT'R SLAT
2	2	0-143-60PL-02	2" X 3" X 71" PLASTIC EDGE SLATS
3	2	0-16-60-06	71" SEAT BRACE
4	2	0-57-00-02	CAST IRON BENCH SUPPORT
5	2	0-57-00-03	CENTER CONTOUR STRAP
6	2	0-57-00-05	END CONTOUR STRAP
7	1	0-57-60-04	71 3/4" PIPE BRACE
8	6	1-12-065	1/2" X 2 1/2" FLT SKT HD CAP SCR
9	8	1-12-116	5/16" X 1" SS BTN SKT HD CAP SCR
10	44	1-13-023	5/16" X 1 1/2" SS BTN SKT HD LAG
11	8	1-20-016	5/16" SS NYLON LOCKNUT
12	60	1-22-017	5/16" SS FLAT WASHER

**DuMor, inc.**

P.O. Box 142 Mifflintown, PA 17059-0142

SCALE : NONE  
DATE DRAWN : 12/11/01  
DRAWN BY : AWH  
DATE REV. : 4/3/08  
REV. BY : AWH

TITLE : BENCH ASSEMBLY

REV.  
C

DRAWING  
NUMBER

57-60PL

SHEET  
2 OF 2