

PARKING SPACE



MUTCD R7-8
12" X 18"

PARKING SIGN

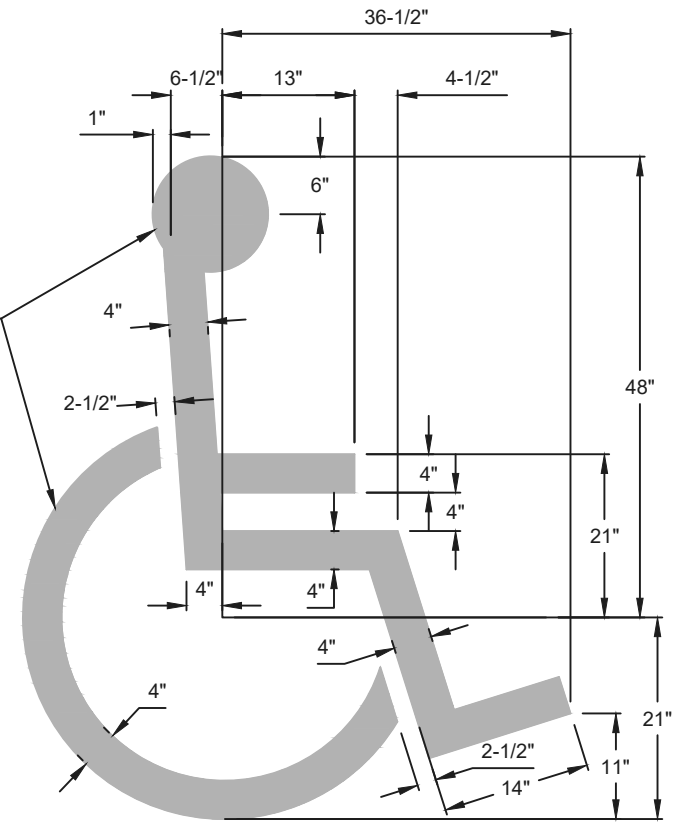
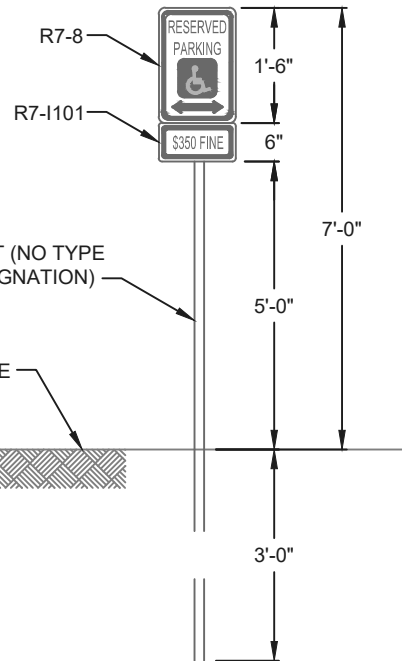


MUTCD R7-1101
12" X 6"

DOUBLE COATED
YELLOW OR BLUE PAINT

POST (NO TYPE
DESIGNATION)

FINISH GRADE



* SYMBOL TO BE CENTERED ON
WIDTH OF PARKING STALL

SYMBOL

GENERAL NOTES:

DEPRESSED CURB OR CURB RAMPS REQUIRED WITH ACCESS TO A 5' WIDE PAVED SURFACE

DISTANCE FROM BACK OF CURB TO THE FACE OF SIGN SHALL BE 5' MAX.

ALL SIGNAGE MUST CONFIRM WITH LATEST M.U.T.C.D. STANDARDS

PAVEMENT MARKINGS MATERIAL FOR HMA SURFACE SHALL BE THERMOPLASTIC AND PCC SURFACE SHALL BE POLYURETHANE

STANDARD RDY-006



CITY OF WEST CHICAGO
475 MAIN STREET
WEST CHICAGO, IL 60185
PHONE: 630-293-2255
FAX: 630-293-2971

ACCESSIBLE PARKING SPACES

CITY OF WEST CHICAGO
CONSTRUCTION SPECIFICATIONS,
STANDARDS, AND DETAILS

REVISIONS

NO.	DATE	DESCRIPTION