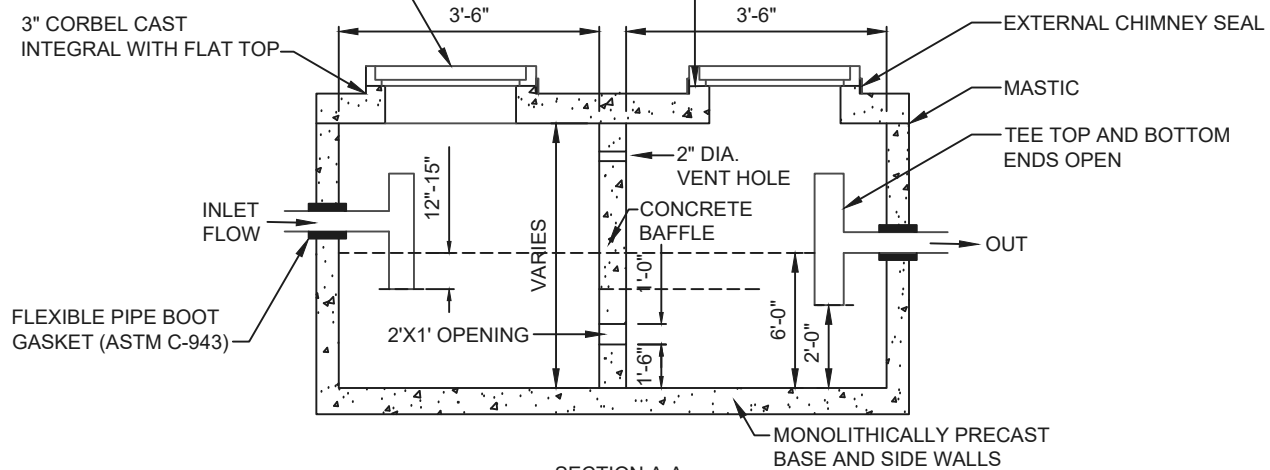


PLAN

NEENAH R-1772 OR EAST JORDAN 1022 FRAME AND LID WITH CONCEALED PICKHOLE AND SELF-SEALING GASKET, WITH MACHINED HORIZONTAL BEARING SURFACE WITH WORD "SANITARY" CAST INTO LID

ADJUSTING RINGS (2 IN. MIN., 8 IN. MAX.) CRETEX PRO-RING OR APPROVED EQUAL. RINGS SHALL BE RATED FOR H-20 LOADING. ADD 26"X24" CONE AND OR 36" BARREL SECTION AS NECESSARY



SECTION A-A

GENERAL NOTES:

THE GREASE TRAP SHALL BE LOCATED OUTSIDE AND IN A PLACE EASILY ACCESSIBLE FOR CLEANING AND INSPECTION.

EXTERIOR CHIMNEY SEALS CRETEX "CLASSIC", CANUSE "WRAPIDSEAL" OR ADAPTOR INC.

THE MINIMUM 1,000 GALLON HOLDING CAPACITY SHALL BE BASED UPON DEPTH MEASURED FROM THE TANK BOTTOM TO THE DISCHARGE INVERT. THE MINIMUM LIQUID DEPTH SHALL BE 6 FEET.

INTERIOR PIPING SHALL BE PVC, SCH 40 OR HEAVIER, GLUED JOINTS.

CONCRETE GREASE BASIN SHALL BE LINED WITH AN APPROVED BIOGENIC CORROSION RESISTANT LINER OR FABRICATED WITH AN APPROVED CONCRETE ADDITIVE.

STANDARD SAN-005



CITY OF WEST CHICAGO
475 MAIN STREET
WEST CHICAGO, IL 60185
PHONE: 630-293-2255
FAX: 630-293-2971

GREASE BASIN

CITY OF WEST CHICAGO
CONSTRUCTION SPECIFICATIONS,
STANDARDS, AND DETAILS

REVISIONS

NO.	DESCRIPTION