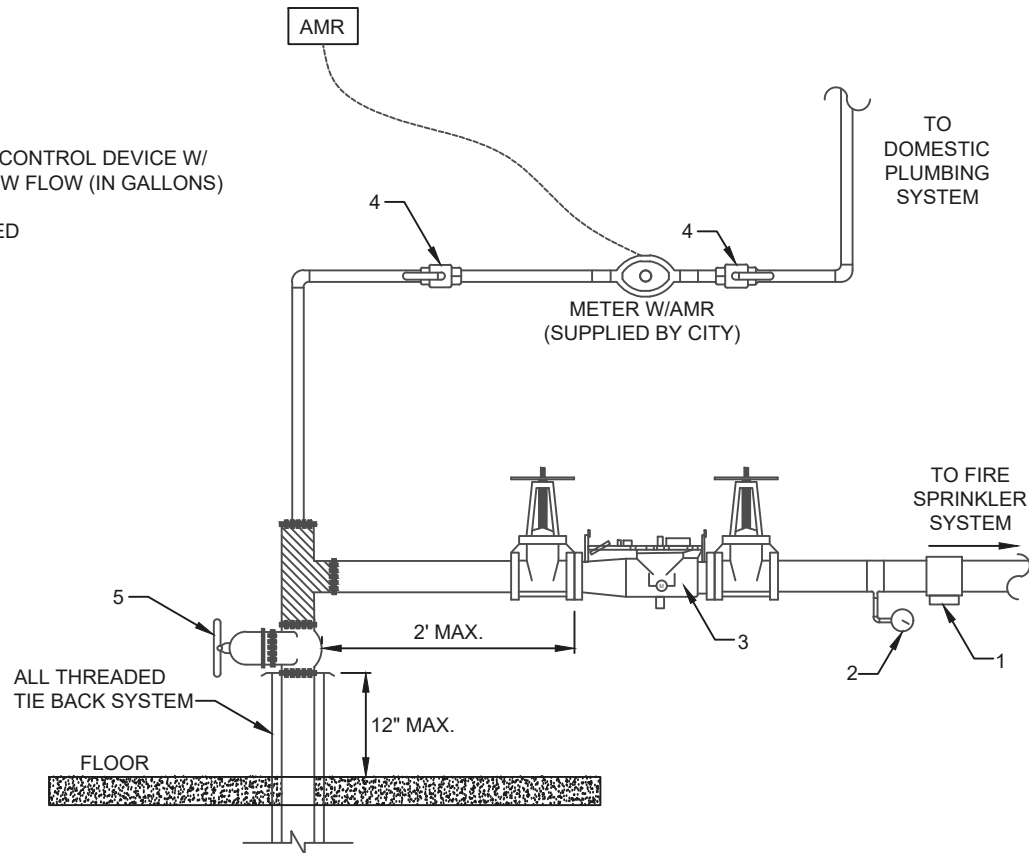


- 1 - FLOW SWITCH
- 2 - PRESSURE GAUGE
- 3 - CROSS CONNECTION CONTROL DEVICE W/  
VALVES, METERED LOW FLOW (IN GALLONS)
- 4 - BALL VALVE
- 5 - OS&Y VALVE, UL LISTED



**GENERAL NOTES:**

REFER TO NEPTUNE METER INSTALLATION INSTRUCTION FOR ADDITIONAL GENERAL AND INSTALLATION REQUIREMENTS.

ALL WATER METER BE INSTALLED HORIZONTALLY. VERTICAL INSTALLMENT SHALL BE PROHIBITED.

BONDING OF ELECTRICAL SYSTEM TO THE WATER METER SHALL NOT BE ALLOWED.

SPRINKLER METERS ARE TO BE INSTALLED AFTER MAIN METER TO RECEIVE METERING CREDIT.

**COMBINED WATER SERVICE 3" AND DOMESTIC SUPPLY 2" AND LARGER**

STANDARD WM-010



CITY OF WEST CHICAGO  
475 MAIN STREET  
WEST CHICAGO, IL 60185  
PHONE: 630-293-2255  
FAX: 630-293-2971

COMMERCIAL METER DETAIL-B

CITY OF WEST CHICAGO  
CONSTRUCTION SPECIFICATIONS,  
STANDARDS, AND DETAILS

REVISIONS

NO.	DESCRIPTION